



XINCHANG

RONGLI BEARING CO.,LTD.

PRODUCTS CATALOGUE

2024 VERSION



Rongli manufacture since 2003

COMPANY INTRODUCTION

新昌县容立轴承有限公司创办于2003年，是一家集制造和经销轴承为一体的专业大型轴承企业。产品的类型涵盖物流运输、车库门、汽车零配件等三大领域，产品包括车库门滑轮，轴承、传输类轴承及组件、汽车千斤顶轴承等四大类。

经过20年的发展，公司拥有割料车间、冲压车间、车削车间、装配车间、注塑车间和检验车间等全生产流程加工线。数字化管理与智能装备已经成为了我们企业的核心竞争力：我们实现了高速冲床，数控机床，自动装备、机器人制造的持续改进；以数字化管理为依托，我们从原料入库、加工生产、品控检验、物流仓储、成本管控、问题点溯源等各个环节实时监控，动态管理，实现了全面覆盖。

公司通过ISO9001质量体系，以严苛的产品要求，完善的质量体系，齐全的检测设备，规范的流程管理，先后与多家全球五百强企业建立战略合作，产品出口至欧美海外市场，获得了客户高度赞誉和认可，成功取得宝马、通用二级供应商及欧美各大主机厂一级供应商资质。

容立轴承坚持“小而美、专而精”的发展理念，持续推进科技创新、工艺创新和产品质量升级，使主导产品向专、精、特、新方向发展，勇当中国一流的轴承制造商和解决方案的提供者。

Xinchang Rongli Bearing Co., Ltd. was founded in 2003 and is a professional large-scale bearing enterprise that integrates manufacturing and distribution of bearings. The types of products cover three major fields: logistics transportation, garage doors, and automotive parts. The products include garage door pulleys, bearings, transmission bearings and components, and automotive jack bearings.

After 20 years of development, the company has a full production process processing line including cutting workshop, stamping workshop, turning workshop, assembly workshop, injection molding workshop, and inspection workshop. Digital management and intelligent equipment have become the core competitiveness of our enterprise: we have achieved continuous improvement in high-speed punching machines, CNC machine tools, automatic equipment, and robot manufacturing; Based on digital management, we have achieved comprehensive coverage through real-time monitoring and dynamic management of various links such as raw material warehousing, processing and production, quality control and inspection, logistics warehousing, cost control, and problem tracing.

The company has passed the ISO9001 quality system, with strict product requirements, a



comprehensive quality system, complete testing equipment, and standardized process management. It has established strategic cooperation with multiple Fortune 500 companies and exported its products to overseas markets in Europe and America, receiving high praise and recognition from customers. It has successfully obtained qualifications as a second-tier supplier for BMW and General Motors, as well as a first-tier supplier for major host door factories in Europe and America.

Rongli Bearing adheres to the development concept of "small but beautiful, specialized and refined", continuously promotes technological innovation, process innovation, and product quality upgrading, so as to develop its leading products in the direction of specialization, precision, uniqueness, and new, and bravely become a first-class bearing manufacturer and solution provider in China.

OUR CUSTOMERS

凭借着卓越的质量，领先的水平，一流的服务，公司产品出口至欧美海外市场，得到了客户高度赞誉和认可，先后与多家全球五百强企业建立战略合作，成功取得宝马、通用4级供应商及欧美各大主机厂一级供应商资质。我们的年销售额达到了1000万美金。我们拥有行业信誉客户：

AST, BATZ, FLEXIFORCE, FLEX-N-GATE, ASSA ABLOY等

So far, our product has shipped to USA, EUROPE, Indian as well as South East Asia.

Our yearly sales volume achieve USD 10,000,000.

We have industrial reputation customer such as AST, BATZ, FLEXIFORCE, FLEX-N-GATE, ASSA ABLOY.



DEVELOPMENT HISTORY

2004 容立创立，从15个人开始，聚焦于车库门，滚轮和轴承的生产
Rongli was founded with 15 people, focusing on garage door rollers and bearings.

2008 成为宝马的认证供应商
Rongli became a certified supplier of BMW.

2010 容立员工增长到50人，成立了研发销售和质检团队
Rongli's staff grew up to 50, built up the R&D, QC, Sales team.

2012 容立生产范围扩展到物流传送带和其他工业用品
Rongli expanded its production scope from garage door application to logistic conveyor and other industrial applications.

2017 容立搬到新厂房
Rongli moves to new production plant.

2019 完成了自动化生产线改造完成并投产
Automatic production line completed

2020 六轴机器人投入使用
Six-Axis robot using for production

2021 数字化管理MES系统启用
Digital management MES system completed

2022 首次产能突破2000万套/年
2022 Annual production capacity over 2,000,000pcs

2023 与世界领先的创新汽车系统公司FLEX-N-GATE展开合作
Starting cooperation with the world leading company of innovative automotive systems

FUTURE With better production facility and larger production area, Rongli strives to provide customers with best quality product and competitive price.



↓ MACHINERY CAPABILITY



公司拥有完整的生产线，已经建立自动冲床、自动注塑、自动装配、数控车削于一体的自动化生产体系，自动化设备覆盖率70%以上。用这些先进的设备，公司可以供应完整的车库门传送系统轴承以及商业家具轴承，我们最大产量可达到每月220万套。

The company has a complete production line and has established an automated production system that integrates automatic punching machines, automatic injection molding, automatic assembly, and CNC turning. The coverage rate of automated equipment is over 70%. With these advanced equipment, the company can supply complete garage door conveyor system bearings and commercial furniture bearings, and our maximum production can reach 2.2 million sets per month.

QUALITY ASSURANCE

公司秉承严谨求实的精神，建立了坚实有效的一站式数字化管理体系。我们从原料入库、加工生产、品控检验、物流仓储、成本管控、问题点溯源等各个环节实时监控，动态管理，真正实现生产过程可视化，通过ISO9001质量体系，以严苛的产品要求，完善的质量体系，齐全的检测设备，规范化的流程管理，确保产品质量可控、稳定、一致。



The company adheres to the spirit of rigor and practicality, and has established a solid and effective one-stop digital management system. We monitor and manage the production process in real-time from raw material storage, processing and production, quality control and inspection, logistics warehousing, cost control, and problem tracing. Through dynamic management, we truly achieve visualization of the production process. Through the ISO9001 quality system, with strict product requirements, a complete quality system, complete testing equipment, and standardized process management, we ensure that product quality is controllable, stable, and consistent.



PRODUCT LINE

经过20多年的发展，公司已经建立了一套完整的产品体系。产品品类包括非标准定制轴承、物流运输轴承、车库门滑轮轴承、汽车零配件等四大系列。材料包括碳钢、304、尼龙、ABS等等。



After more than 20 years of development, the company has established a complete product system. The product categories include four major series: non-standard customized bearings, logistics conveying bearings, garage door pulley bearings, and automotive spare parts. Materials include carbon steel, 304, nylon, ABS, and so on.



PRODUCT CONTENTS



Drive Bearing 06



Suspension Assembly 28



Garage Door Bearing 34



Garage Door Roller 44

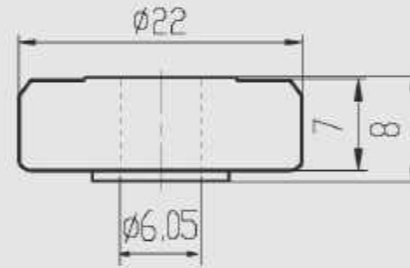
RONGLI

DRIVE BEARING



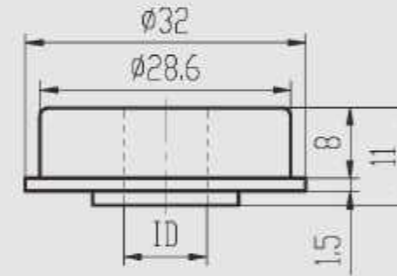
DRIVE BEARING

DRIVE BEARING



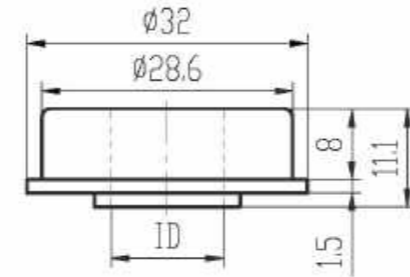
ITEM No.	WEIGHT (kg)	UNIT	SIZE	REMARK
CPB2206H	0.014	PC		

Material: carbon steel.
Inner ring, outer ring and spacer heat treated.
Blue zinc plated.



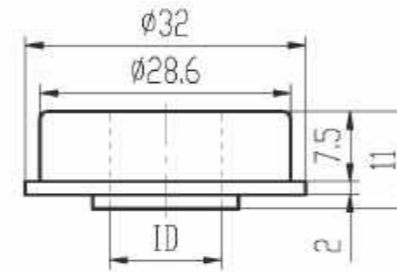
ITEM No.	WEIGHT (kg)	UNIT	SIZE	REMARK
CPB2808C	0.034	PC	ID:Φ7.94	
CPB2909C	0.032	PC	ID:Φ9.52	

Material: carbon steel.
Inner ring, outer ring and spacer heat treated.
Yellow zinc plated.



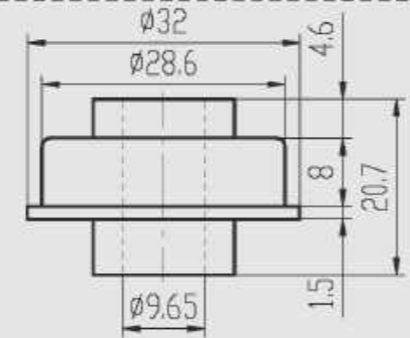
ITEM No.	WEIGHT (kg)	UNIT	SIZE	REMARK
RL2811	0.03	PC	ID:Φ11.11	
RL2812	0.027	PC	ID:Φ12.75	
451582	0.027	PC	ID:Φ12.88	

Material: carbon steel.
Inner ring, outer ring and spacer heat treated.
Blue zinc plated.



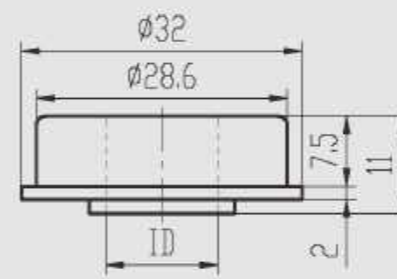
ITEM No.	WEIGHT (kg)	UNIT	SIZE	REMARK
CPB2808SS	0.036	PC	ID:Φ7.94	
CPB2909SS	0.034	PC	ID:Φ9.52	

Material: 304



ITEM No.	WEIGHT (kg)	UNIT	SIZE	REMARK
RL2809Z	0.044	PC		

Material: carbon steel.
Inner ring, outer ring and spacer heat treated.
Blue zinc plated.



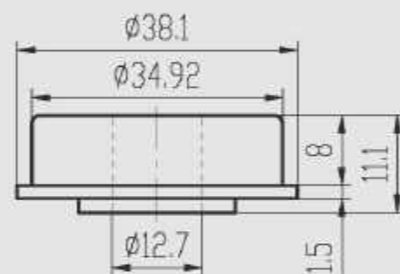
ITEM No.	WEIGHT (kg)	UNIT	SIZE	REMARK
CPB2808-316L	0.036	PC	ID:Φ7.94	
CPB2909-316L	0.034	PC	ID:Φ9.52	

Material: 316L



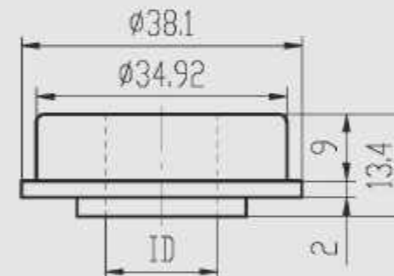
DRIVE BEARING

DRIVE BEARING



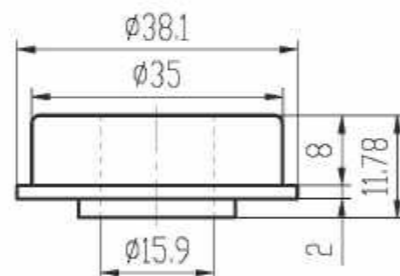
ITEM No.	WEIGHT (kg)	UNIT	SIZE	REMARK
RL3412	0.052	PC		

Material: carbon steel.
Inner ring, outer ring and spacer heat treated.
Blue zinc plated.



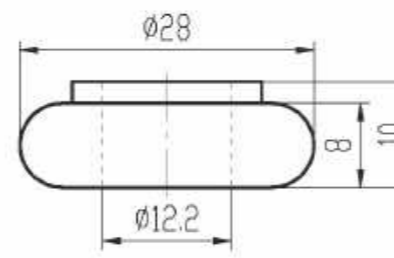
ITEM No.	WEIGHT (kg)	UNIT	SIZE	REMARK
HW-13B	0.055	PC	ID:Φ15.9	
HW-13C	0.045	PC	ID:Φ19.25	

Material: carbon steel.
Inner ring, outer ring and spacer heat treated.
Blue zinc plated.



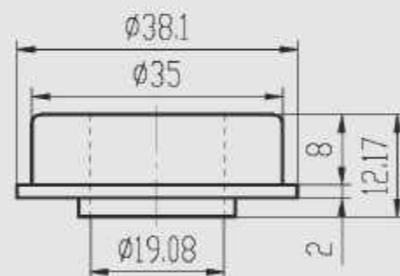
ITEM No.	WEIGHT (kg)	UNIT	SIZE	REMARK
456863	0.046	PC		

Material: carbon steel.
Inner ring, outer ring and spacer heat treated.
Blue zinc plated.



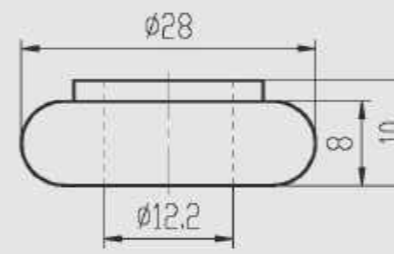
ITEM No.	WEIGHT (kg)	UNIT	SIZE	REMARK
A4480	0.022	PC		

Material: carbon steel
Blue zinc plated.



ITEM No.	WEIGHT (kg)	UNIT	SIZE	REMARK
CPB3519	0.039	PC		

Material: carbon steel.
Inner ring, outer ring and spacer heat treated.
Blue zinc plated.



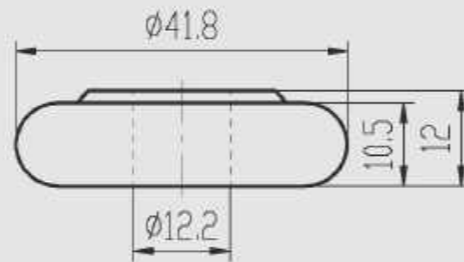
ITEM No.	WEIGHT (kg)	UNIT	SIZE	REMARK
A4490	0.013	PC		

Material: ABS, carbon steel.
Blue zinc plated.



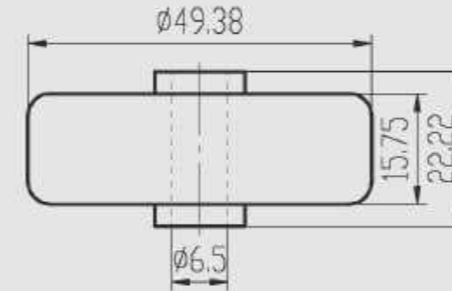
DRIVE BEARING

DRIVE BEARING



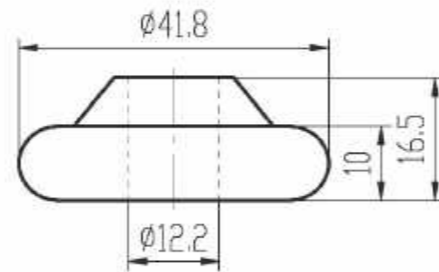
ITEM No.	WEIGHT (kg)	UNIT	SIZE	REMARK
A4500	0.078	PC		

Material: carbon steel.
Blue zinc plated.



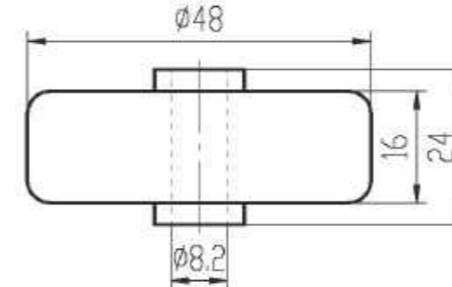
ITEM No.	WEIGHT (kg)	UNIT	SIZE	REMARK
NPD-11283	0.101	PC		

Material: carbon steel.
Inner ring and outer ring heat treated.
Blue zinc plated.



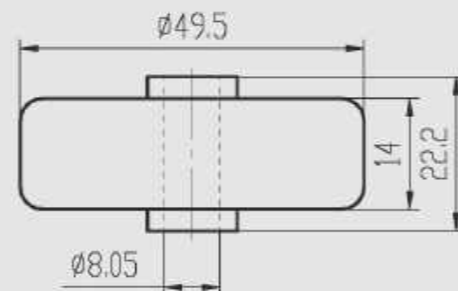
ITEM No.	WEIGHT (kg)	UNIT	SIZE	REMARK
A4510	0.042	PC		

Material: ABS, carbon steel.
Blue zinc plated.



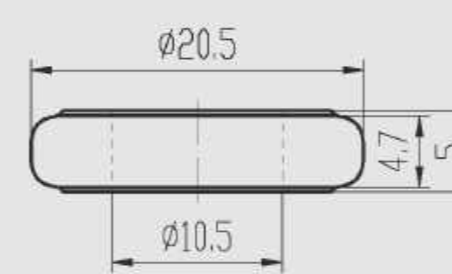
ITEM No.	WEIGHT (kg)	UNIT	SIZE	REMARK
CPB4808B	0.076	PC		

Material: carbon steel.
Inner ring and outer ring heat treated.
Blue zinc plated.



ITEM No.	WEIGHT (kg)	UNIT	SIZE	REMARK
49.5*22.2	0.113	PC		

Material: carbon steel.
Inner ring and outer ring heat treated.
Blue zinc plated.



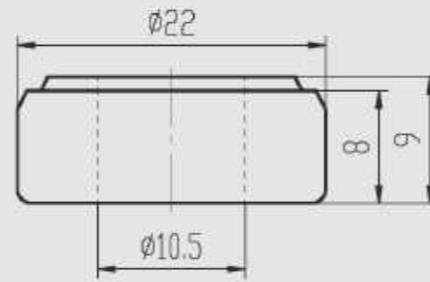
ITEM No.	WEIGHT (kg)	UNIT	SIZE	REMARK
20.5*10.5	0.007	PC		

Material: bearing steel, carbon steel.
Inner ring heat treated.
Blue zinc plated.



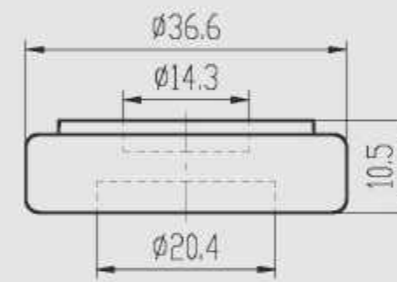
DRIVE BEARING

DRIVE BEARING



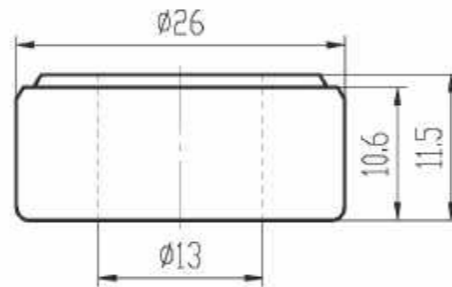
ITEM No.	WEIGHT (kg)	UNIT	SIZE	REMARK
22105	0.014	PC		

Material: carbon steel.
Inner ring heat treated.
Blue zinc plated.



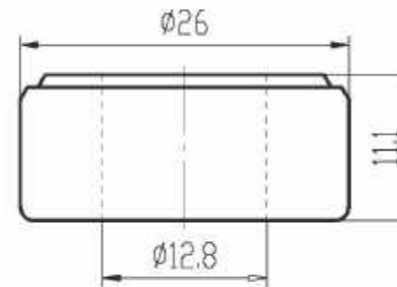
ITEM No.	WEIGHT (kg)	UNIT	SIZE	REMARK
CRB411	0.046	PC		

Material: carbon steel.
Inner ring heat treated.
Phosphating.



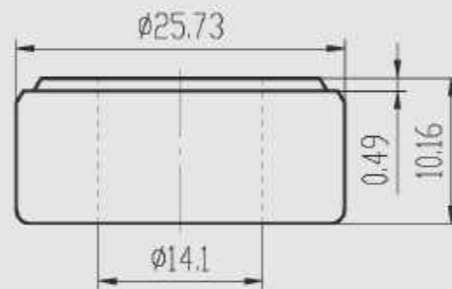
ITEM No.	WEIGHT (kg)	UNIT	SIZE	REMARK
LL-2613	0.026	PC		

Material: bearing steel, carbon steel.
Inner ring heat treated.
Blue zinc plated.



ITEM No.	WEIGHT (kg)	UNIT	SIZE	REMARK
1902932	0.025	PC		

Material: bearing steel, carbon steel.
Inner ring heat treated.
Blue zinc plated, 96h for salt spray test.



ITEM No.	WEIGHT (kg)	UNIT	SIZE	REMARK
LL-2614	0.021	PC		

Material: bearing steel, carbon steel.
Inner ring heat treated.
Blue zinc plated.



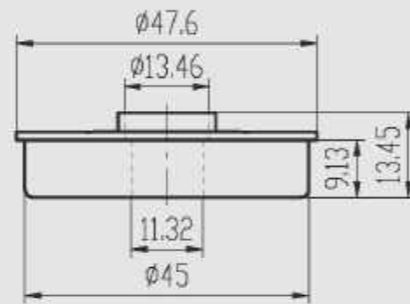
ITEM No.	WEIGHT (kg)	UNIT	SIZE	REMARK
CPB7038	0.244	PC		

Material: carbon steel.
Inner ring and outer ring heat treated.
Blue zinc plated.



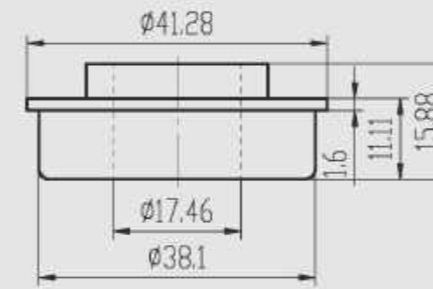
DRIVE BEARING

DRIVE BEARING



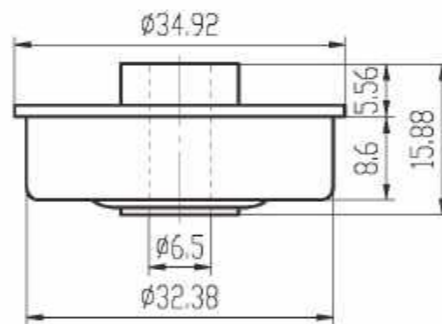
ITEM No.	WEIGHT (kg)	UNIT	SIZE	REMARK
4511	0.074	PC		

Material: carbon steel.
Inner ring, outer ring and spacer heat treated.
Blue zinc plated.



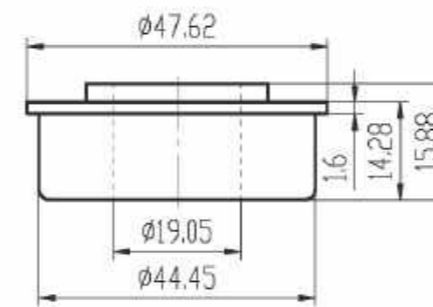
ITEM No.	WEIGHT (kg)	UNIT	SIZE	REMARK
F2248	0.068	PC		

Material: carbon steel.
Inner ring and outer ring heat treated.
Blue zinc plated.
Full ball structure.



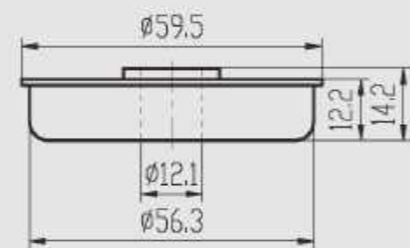
ITEM No.	WEIGHT (kg)	UNIT	SIZE	REMARK
CB127-04M	0.035	PC		

Material: carbon steel.
Inner ring and outer ring heat treated.
Blue zinc plated.



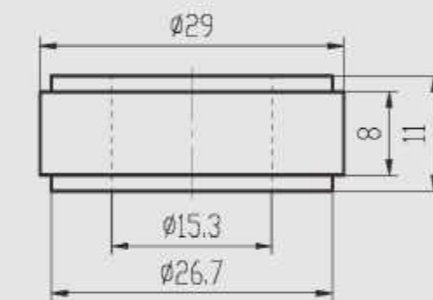
ITEM No.	WEIGHT (kg)	UNIT	SIZE	REMARK
F2456	0.11	PC		

Material: carbon steel.
Inner ring and outer ring heat treated.
Blue zinc plated.
Full ball structure.



ITEM No.	WEIGHT (kg)	UNIT	SIZE	REMARK
2610-A	0.089	PC		

Material: carbon steel.
Inner ring, outer ring and spacer heat treated.
Blue zinc plated.



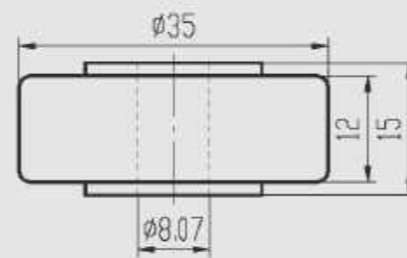
ITEM No.	WEIGHT (kg)	UNIT	SIZE	REMARK
19019025	0.027	PC		

Material: PA66, bearing steel.
Inner ring heat treated.
Blue zinc plated, 96h for salt spray test.

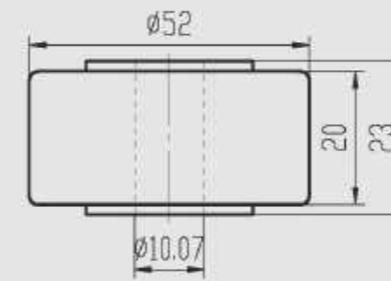


DRIVE BEARING

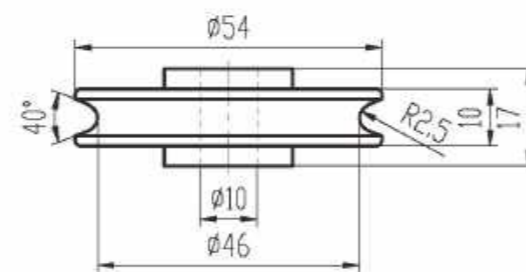
DRIVE BEARING



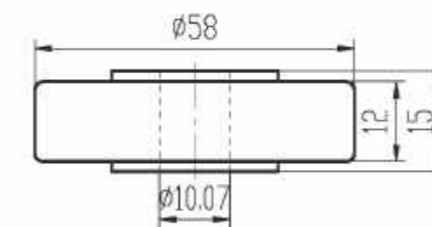
ITEM No.	WEIGHT (kg)	UNIT	SIZE	REMARK
CCB13508B	0.08	PC		
				Material: bearing steel, carbon steel. Inner ring and outer ring heat treated. Blue zinc plated. Full ball structure.



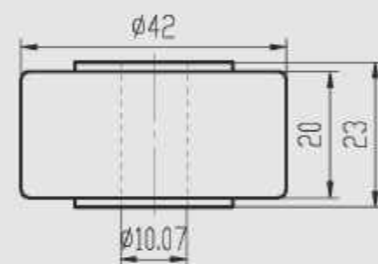
ITEM No.	WEIGHT (kg)	UNIT	SIZE	REMARK
CCB15210A	0.308	PC		
				Material: bearing steel, carbon steel. Inner ring and outer ring heat treated. Yellow zinc plated. Full ball structure.



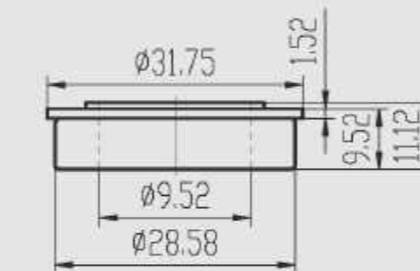
ITEM No.	WEIGHT (kg)	UNIT	SIZE	REMARK
CCB15410	0.159	PC		
				Material: carbon steel. Inner ring and outer ring heat treated. Blue zinc plated. Full ball structure.



ITEM No.	WEIGHT (kg)	UNIT	SIZE	REMARK
CCB158105A	0.236	PC		
				Material: bearing steel, carbon steel. Inner ring and outer ring heat treated. Yellow zinc plated. Full ball structure.



ITEM No.	WEIGHT (kg)	UNIT	SIZE	REMARK
CCB14210	0.192	PC		
				Material: bearing steel, carbon steel. Inner ring and outer ring heat treated. Yellow zinc plated. Full ball structure.

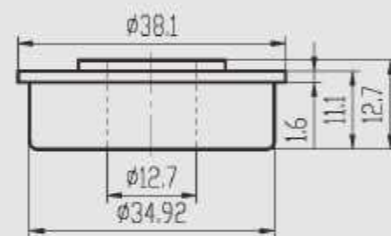


ITEM No.	WEIGHT (kg)	UNIT	SIZE	REMARK
F6	0.033	PC		
				Material: bearing steel. Inner ring and outer ring heat treated. Double shield. Cage structure.

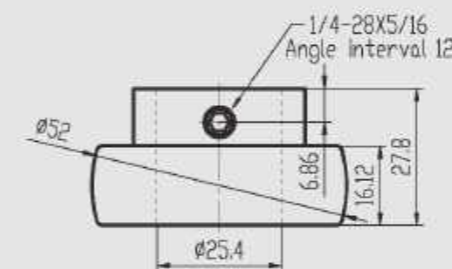


DRIVE BEARING

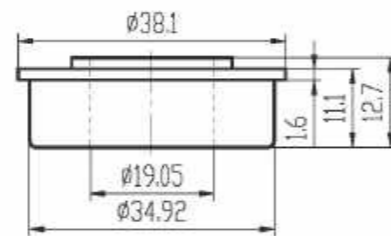
DRIVE BEARING



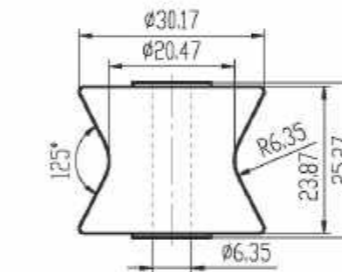
ITEM No.	WEIGHT (kg)	UNIT	SIZE	REMARK
32262-88	0.053	PC		Material: carbon steel. Inner ring and outer ring heat treated. Blue zinc plated. Double shield. Cage structure.



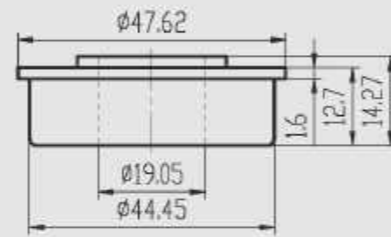
ITEM No.	WEIGHT (kg)	UNIT	SIZE	REMARK
6040072	0.166	PC		Material: bearing steel, carbon steel Inner ring and outer ring heat treated. Double shield. Cage structure. The inner ring with set screw.



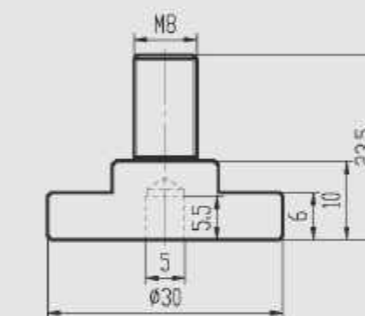
ITEM No.	WEIGHT (kg)	UNIT	SIZE	REMARK
32423-88	0.04	PC		Material: carbon steel. Inner ring and outer ring heat treated. Blue zinc plated. Double shield. Cage structure.



ITEM No.	WEIGHT (kg)	UNIT	SIZE	REMARK
CCB23006	0.072	PC		Material: bearing steel, carbon steel Inner ring and outer ring heat treated. Two-low ball structure. Full ball structure.



ITEM No.	WEIGHT (kg)	UNIT	SIZE	REMARK
32862-88	0.094	PC		Material: carbon steel. Inner ring and outer ring heat treated. Blue zinc plated. Double shield. Cage structure.

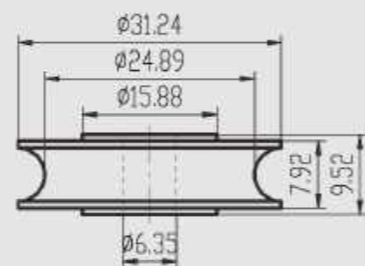


ITEM No.	WEIGHT (kg)	UNIT	SIZE	REMARK
94-0161	0.034	PC		Material: carbon steel Inner ring and outer ring heat treated. Yellow zinc plated. Cage structure.



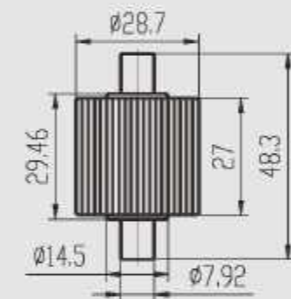
DRIVE BEARING

DRIVE BEARING



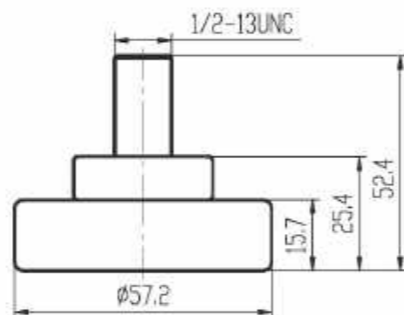
ITEM No.	WEIGHT (kg)	UNIT	SIZE	REMARK
SR342-162DS	0.031	PC		

Material: carbon steel.
Inner ring and outer ring heat treated.
Yellow zinc plated.
Full ball structure.



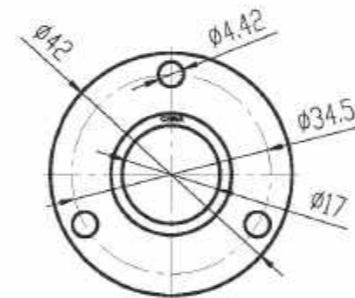
ITEM No.	WEIGHT (kg)	UNIT	SIZE	REMARK
D2333	0.117	PC		

Material: bearing steel, carbon steel.
Inner ring and outer ring heat treated.
Blue zinc plated.
Two-low ball structure.
Cage structure.



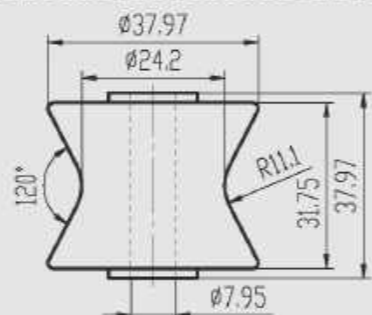
ITEM No.	WEIGHT (kg)	UNIT	SIZE	REMARK
35.5*57.3	0.317	PC		

Material: carbon steel.
Inner ring and outer ring heat treated.
Blue zinc plated.
Double shield.
Full ball structure.



ITEM No.	WEIGHT (kg)	UNIT	SIZE	REMARK
6903ZZ	0.052	PC		

Material: bearing steel.
Inner ring and outer ring heat treated.
Double shield.
Cage structure.

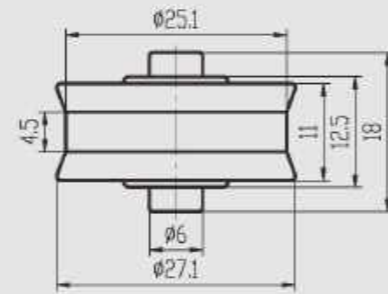


ITEM No.	WEIGHT (kg)	UNIT	SIZE	REMARK
D2500-29	0.142	PC		

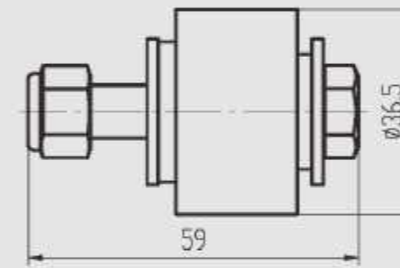
Material: carbon steel.
Inner ring and outer ring heat treated.
Blue zinc plated.
Two-low ball structure.
Full ball structure.

DRIVE BEARING

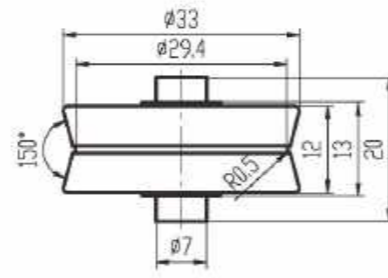
DRIVE BEARING



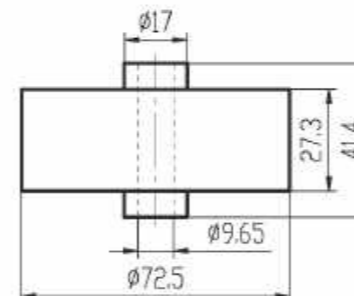
ITEM No.	WEIGHT (kg)	UNIT	SIZE	REMARK
6*25*18	0.026	PC		
				Material: PA66, carbon steel. Inner ring and outer ring heat treated. Blue zinc plated. Two-low ball structure. Cage structure.



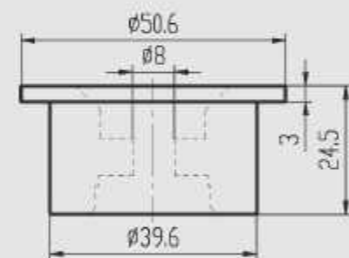
ITEM No.	WEIGHT (kg)	UNIT	SIZE	REMARK
295831SS	0.076	PC		
				Material: DuPont ST801, stainless steel.



ITEM No.	WEIGHT (kg)	UNIT	SIZE	REMARK
D33	0.030	PC		
				Material: PA66, carbon steel. Inner ring and outer ring heat treated. Yellow zinc plated. Two-low ball structure. Cage structure.



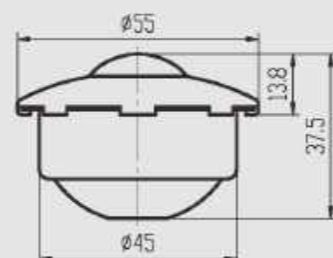
ITEM No.	WEIGHT (kg)	UNIT	SIZE	REMARK
2.875Wheel	0.126	PC		
				Material: PA6, carbon steel. Inner ring, outer ring and spacer heat treated. Blue zinc plated.



ITEM No.	WEIGHT (kg)	UNIT	SIZE	REMARK
39.6*24.5	0.041	PC		
				Material: POM, TPU. 608ZZ inside.

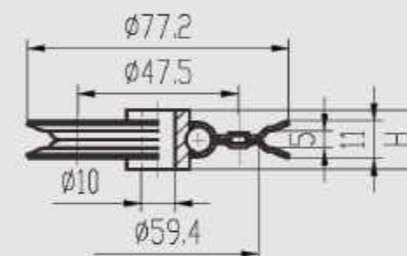
DRIVE BEARING

DRIVE BEARING



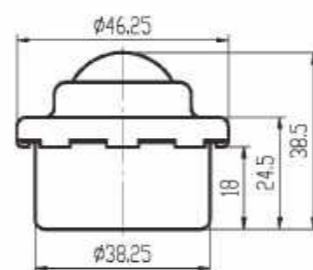
ITEM No.	WEIGHT (kg)	UNIT	SIZE	REMARK
0536	0.281	PC		

Material: bearing steel, carbon steel.
Outer ring heat treated.
Blue zinc plated.



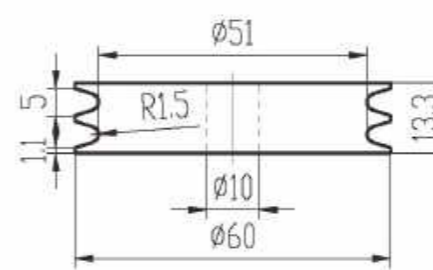
ITEM No.	WEIGHT (kg)	UNIT	SIZE	REMARK
634A	0.125	PC	H:17.52	
634B	0.13	PC	H:20.57	
551N	0.12	PC	H:14.40	

Material: carbon steel, aluminum(rivet).
Blue zinc plated.



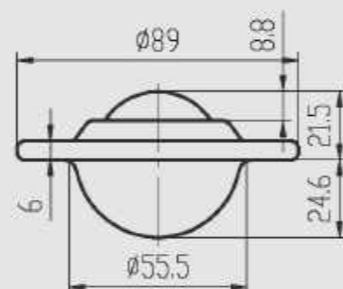
ITEM No.	WEIGHT (kg)	UNIT	SIZE	REMARK
KIT7766	0.166	PC		

Material: carbon steel.
Outer ring heat treated.
Blue zinc plated.



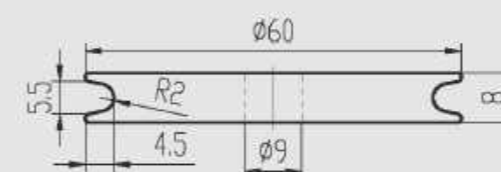
ITEM No.	WEIGHT (kg)	UNIT	SIZE	REMARK
P035	0.202	PC		

Material: carbon steel.
6200-ZZ inside.
Blue zinc plated.



ITEM No.	WEIGHT (kg)	UNIT	SIZE	REMARK
620-3622	0.504	PC		

Material: stainless steel.



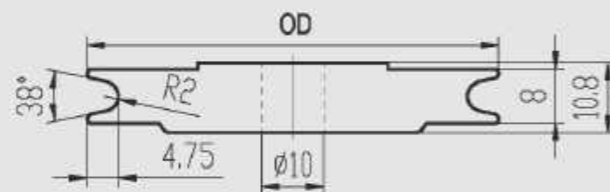
ITEM No.	WEIGHT (kg)	UNIT	SIZE	REMARK
K002274	0.071	PC		

Material: carbon steel, thickness: 2.5mm.
629-2RS inside.
Blue zinc plated.

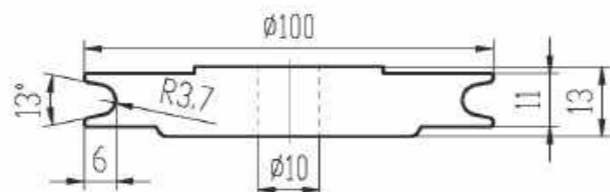


DRIVE BEARING

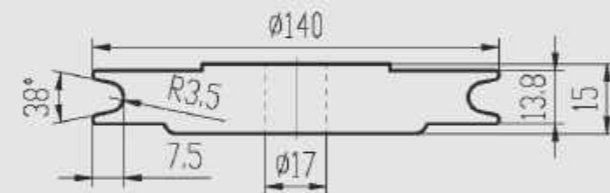
SUSPENSION ASSEMBLY



ITEM No.	WEIGHT (kg)	UNIT	SIZE	REMARK
570-60	0.105	PC	OD:Φ68	
570-80	0.150	PC	OD:Φ88	
				Material: carbon steel, thickness: 2.5mm 6200-ZZ inside. Blue zinc plated.



ITEM No.	WEIGHT (kg)	UNIT	SIZE	REMARK
554-100	0.268	PC		
				Material: carbon steel, thickness: 3.5mm 6300-ZZ inside. Blue zinc plated.



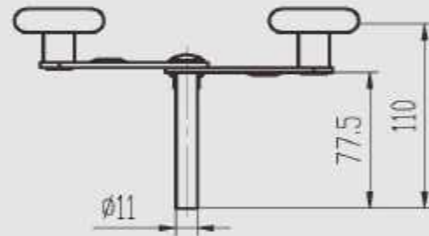
ITEM No.	WEIGHT (kg)	UNIT	SIZE	REMARK
554-140	0.569	PC		
				Material: carbon steel, thickness: 4mm 6203-ZZ inside. Blue zinc plated.

RONGLI

SUSPENSION ASSEMBLY



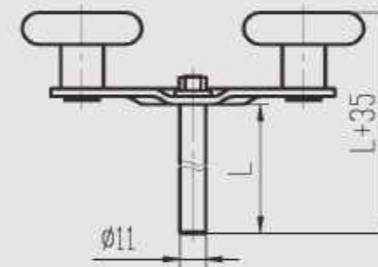
SUSPENSION ASSEMBLY



ITEM No.	WEIGHT (kg)	UNIT	SIZE	REMARK
CRB8358F	0.332	PC		

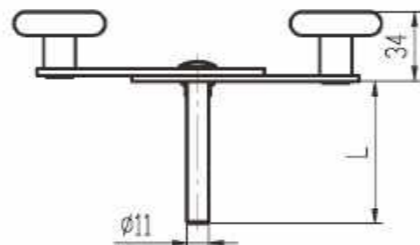
Material: PA6, carbon steel.
Cage thickness: 2.5mm.
Blue zinc plated.
With 2 wheel.

SUSPENSION ASSEMBLY



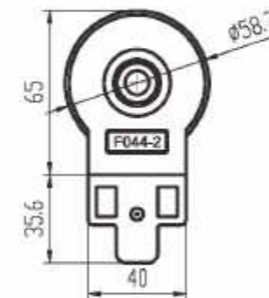
ITEM No.	WEIGHT (kg)	UNIT	SIZE	REMARK
F035-13	0.33	PC	L=76	
F035-14	0.374	PC	L=136	

Material: PA6, carbon steel.
Cage thickness: 3mm.
Blue zinc plated.
With 2 wheel.



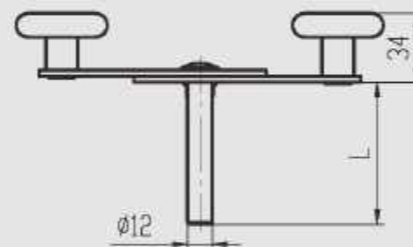
ITEM No.	WEIGHT (kg)	UNIT	SIZE	REMARK
124654	0.587	PC	L=162	
124655	0.545	PC	L=103	
596-11HD	0.538	PC	L=98.5	

Material: PA6, carbon steel.
Cage thickness: 3mm.
Blue zinc plated.
With 2 wheel.



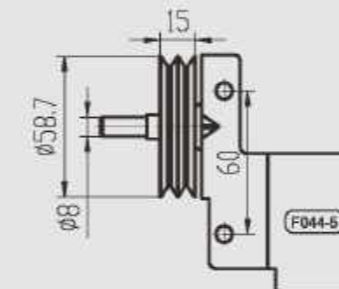
ITEM No.	WEIGHT (kg)	UNIT	SIZE	REMARK
F044-2	0.191	PC		

Material: PA6, aluminum(rivet), carbon steel.
Cage thickness: 2mm.
63000RS inside.
Blue zinc plated.



ITEM No.	WEIGHT (kg)	UNIT	SIZE	REMARK
CRB8309A	0.611	PC	L=160	
594	0.540	PC	L=98.5	

Material: PA6, carbon steel.
Cage thickness: 3mm.
Blue zinc plated.
With 2 wheel.

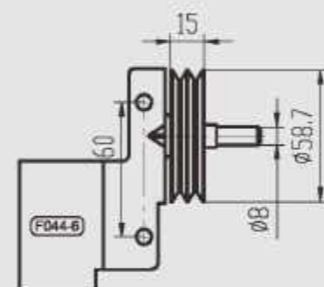


ITEM No.	WEIGHT (kg)	UNIT	SIZE	REMARK
F044-5	0.18	PC		

Material: PA6, carbon steel.
Cage thickness: 2mm.
63000RS inside.
Blue zinc plated.

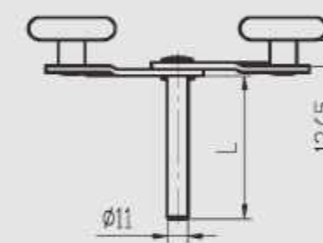
SUSPENSION ASSEMBLY

SUSPENSION ASSEMBLY



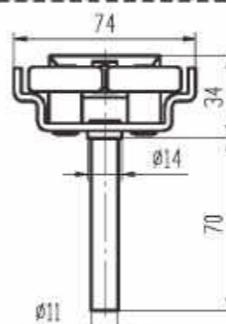
ITEM No.	WEIGHT (kg)	UNIT	SIZE	REMARK
FD44-6	0.183	PC		

Material: PA6, carbon steel.
Cage thickness: 2mm.
63000RS inside.
Blue zinc plated.



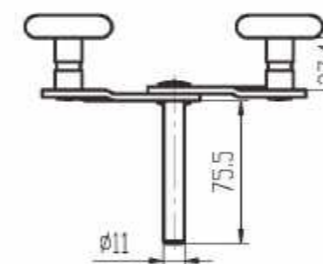
ITEM No.	WEIGHT (kg)	UNIT	SIZE	REMARK
595RSF	0.327	PC	L=75.5	
595RSF-140	0.372	PC	L=136.5	

Material: PA6, carbon steel.
Cage thickness: 3.5mm.
Blue zinc plated.
With 2 wheel.



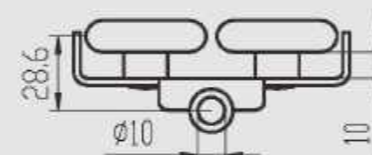
ITEM No.	WEIGHT (kg)	UNIT	SIZE	REMARK
CRB8902	0.237	PC		

Material: PA6, carbon steel.
Cage thickness: 3mm.
Blue zinc plated.



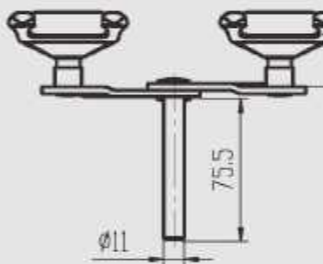
ITEM No.	WEIGHT (kg)	UNIT	SIZE	REMARK
595RSR	0.359	PC		

Material: PA6, carbon steel.
Cage thickness: 3.5mm.
Blue zinc plated.
With 2 wheel.



ITEM No.	WEIGHT (kg)	UNIT	SIZE	REMARK
RL592	0.281	PC		

Material: PA6, carbon steel.
Cage thickness: 2.5mm.
Blue zinc plated.
With 2 wheel.

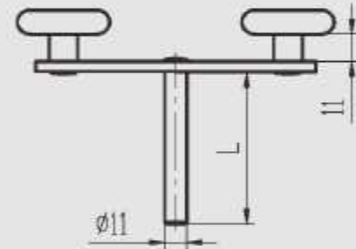


ITEM No.	WEIGHT (kg)	UNIT	SIZE	REMARK
595RSRC	0.379	PC		

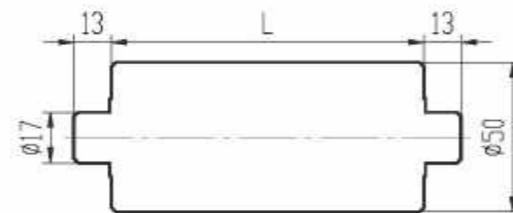
Material: PA6, carbon steel.
Cage thickness: 3.5mm.
Blue zinc plated.
With 2 wheel.

SUSPENSION ASSEMBLY

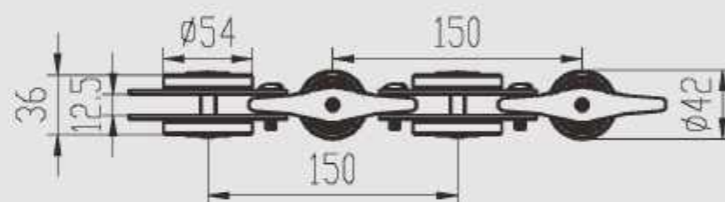
GARAGE DOOR BEARING



ITEM No.	WEIGHT (kg)	UNIT	SIZE	REMARK
D72376-1	0.458	PC	L=93	Material: PA66, carbon steel. Cage thickness: 5mm. Blue zinc plated. With 2 wheel.
D72376-2	0.510	PC	L=163	



ITEM No.	WEIGHT (kg)	UNIT	SIZE	REMARK
GT5060	0.646	PC	L=60	Material: carbon steel. With two 6203-ZZ inside. Yellow zinc plated.
GT50105	1.020	PC	L=105	



ITEM No.	WEIGHT (kg)	UNIT	SIZE	REMARK
2035	1.323	PC		Material: bearing steel, carbon steel. Cage thickness: 2.5mm.

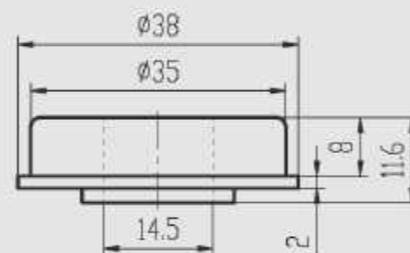
RONGLI

GARAGE DOOR BEARING

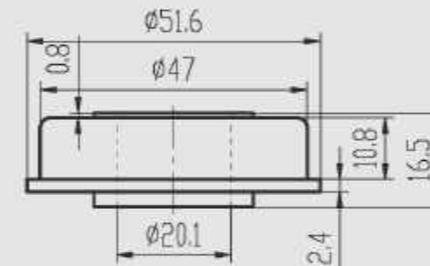


GARAGE DOOR BEARING

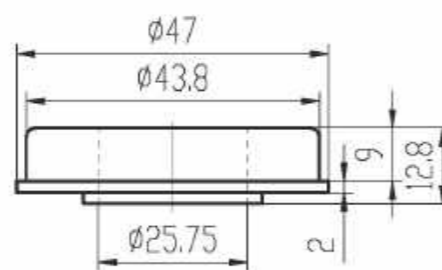
GARAGE DOOR BEARING



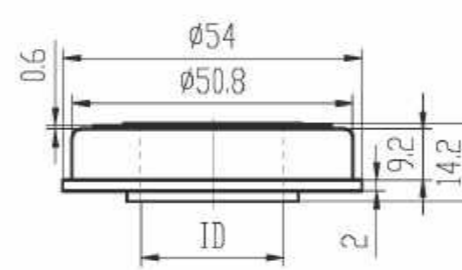
ITEM No.	WEIGHT (kg)	UNIT	SIZE	REMARK
124832	0.051	PC		
				Material: carbon steel. Inner ring and outer ring heat treated. Blue zinc plated.



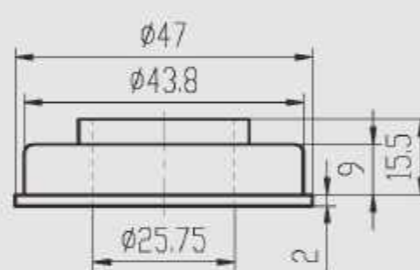
ITEM No.	WEIGHT (kg)	UNIT	SIZE	REMARK
PFB47200	0.116	PC		
				Material: carbon steel. Inner ring and outer ring heat treated. Blue zinc plated.



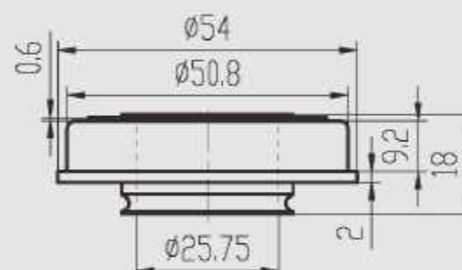
ITEM No.	WEIGHT (kg)	UNIT	SIZE	REMARK
164332	0.069	PC		
				Material: carbon steel. Inner ring and outer ring heat treated. Blue zinc plated.



ITEM No.	WEIGHT (kg)	UNIT	SIZE	REMARK
CRB8403	0.103	PC	ID:Φ25.75	
CRB84032	0.103	PC	ID:Φ25.85	
				Material: carbon steel. Inner ring and outer ring heat treated. Blue zinc plated.



ITEM No.	WEIGHT (kg)	UNIT	SIZE	REMARK
227145	0.075	PC		
				Material: carbon steel. Inner ring and outer ring heat treated. Blue zinc plated.

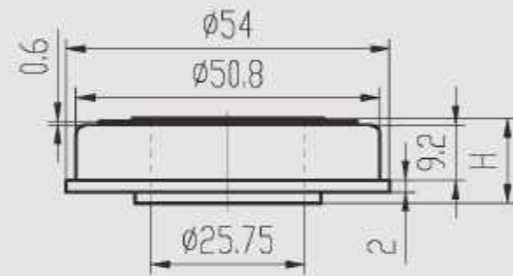


ITEM No.	WEIGHT (kg)	UNIT	SIZE	REMARK
CRB84161	0.107	PC		
				Material: carbon steel. Inner ring and outer ring heat treated. Blue zinc plated.

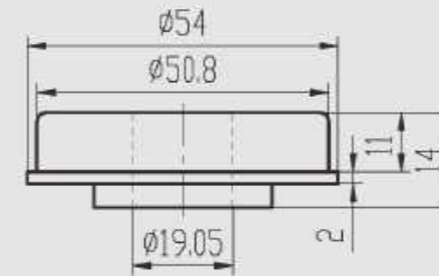


GARAGE DOOR BEARING

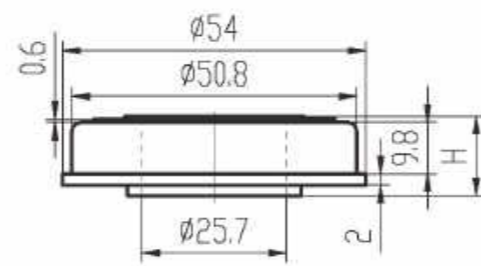
GARAGE DOOR BEARING



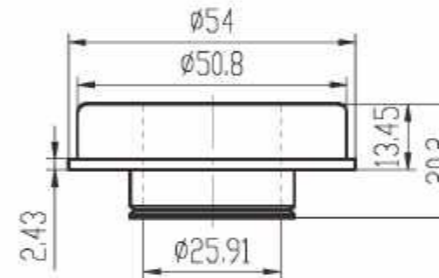
ITEM No.	WEIGHT (kg)	UNIT	SIZE	REMARK
137005	0.107	PC	H:17	Material: carbon steel. Inner ring and outer ring heat treated. Blue zinc plated.
137006	0.103	PC	H:14.2	



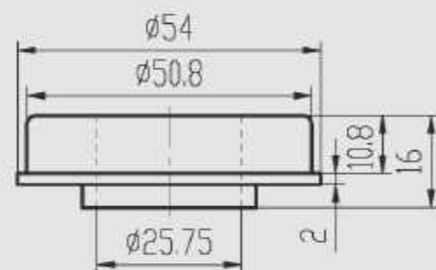
ITEM No.	WEIGHT (kg)	UNIT	SIZE	REMARK
237703	0.139	PC		Material: carbon steel. Inner ring and outer ring heat treated. Blue zinc plated.



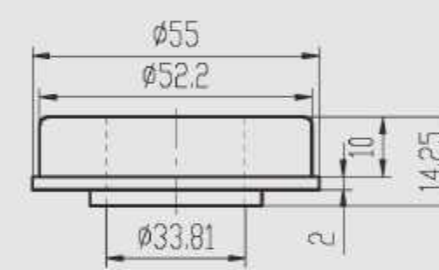
ITEM No.	WEIGHT (kg)	UNIT	SIZE	REMARK
CR88416	0.11	PC	H:16	Material: carbon steel. Inner ring and outer ring heat treated. Blue zinc plated.
CR88416B	0.114	PC	H:18	



ITEM No.	WEIGHT (kg)	UNIT	SIZE	REMARK
USA-BLG	0.122	PC		Material: carbon steel. Inner ring and outer ring heat treated. Blue zinc plated.



ITEM No.	WEIGHT (kg)	UNIT	SIZE	REMARK
451853	0.115	PC		Material: carbon steel. Inner ring and outer ring heat treated. Blue zinc plated.

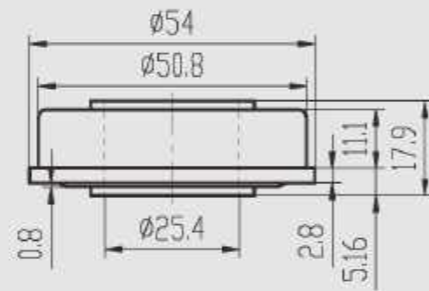


ITEM No.	WEIGHT (kg)	UNIT	SIZE	REMARK
158372	0.096	PC		Material: carbon steel. Inner ring and outer ring heat treated. Blue zinc plated.



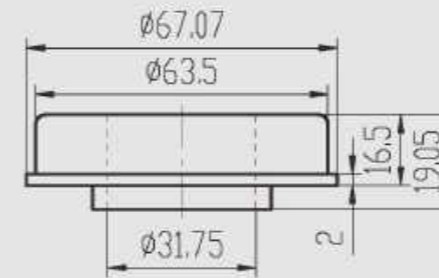
GARAGE DOOR BEARING

GARAGE DOOR BEARING



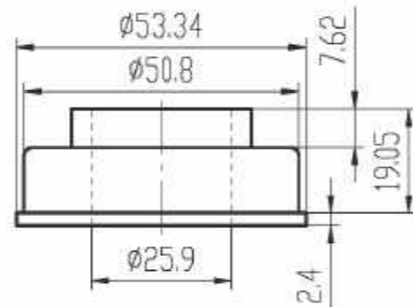
ITEM No.	WEIGHT (kg)	UNIT	SIZE	REMARK
160SF1632	0.126	PC		

Material: carbon steel.
Inner ring and outer ring heat treated.
Blue zinc plated.



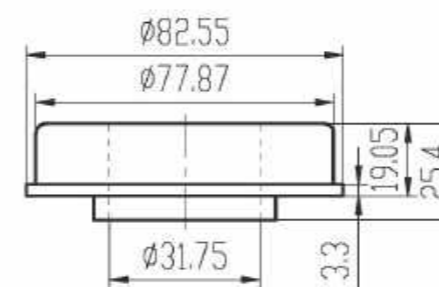
ITEM No.	WEIGHT (kg)	UNIT	SIZE	REMARK
TW-30	0.242	PC		

Material: carbon steel.
Inner ring and outer ring heat treated.
Blue zinc plated.



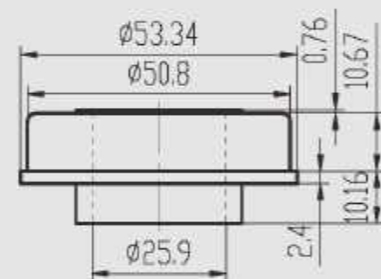
ITEM No.	WEIGHT (kg)	UNIT	SIZE	REMARK
8040102	0.146	PC		

Material: carbon steel.
Inner ring and outer ring heat treated.
Blue zinc plated.



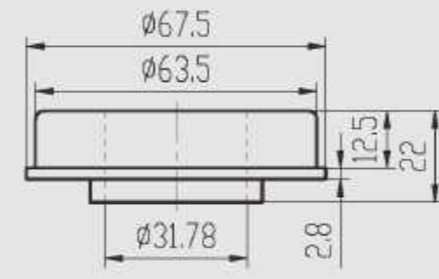
ITEM No.	WEIGHT (kg)	UNIT	SIZE	REMARK
CRB8422	0.492	PC		

Material: carbon steel.
Inner ring and outer ring heat treated.
Blue zinc plated.



ITEM No.	WEIGHT (kg)	UNIT	SIZE	REMARK
6040106	0.139	PC		

Material: carbon steel.
Inner ring and outer ring heat treated.
Blue zinc plated.

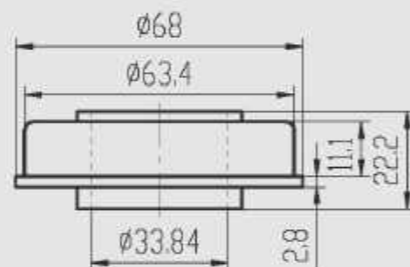


ITEM No.	WEIGHT (kg)	UNIT	SIZE	REMARK
USA-C	0.258	PC		

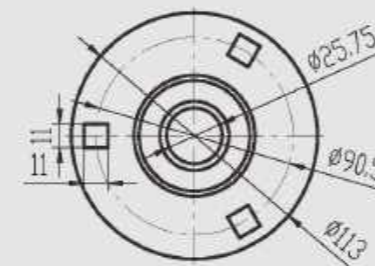
Material: carbon steel.
Inner ring and outer ring heat treated.
Blue zinc plated.

GARAGE DOOR BEARING

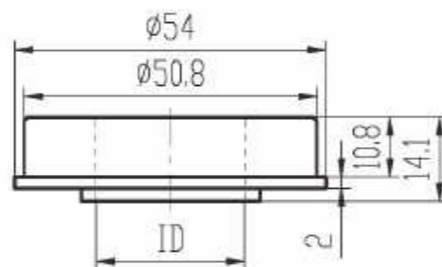
GARAGE DOOR BEARING



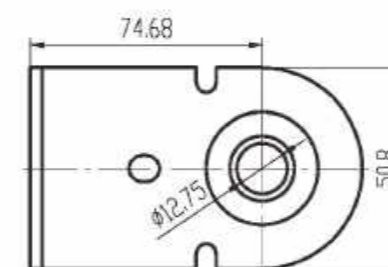
ITEM No.	WEIGHT (kg)	UNIT	SIZE	REMARK
124892	0.207	PC		
				Material: carbon steel. Inner ring and outer ring heat treated. Blue zinc plated.



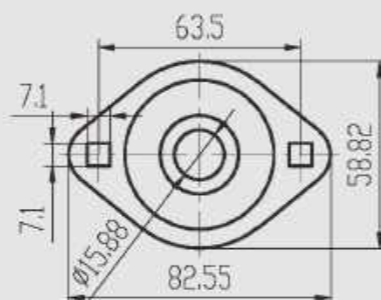
ITEM No.	WEIGHT (kg)	UNIT	SIZE	REMARK
1*孔轴承座	0.284	PC		
				Material: carbon steel Inner ring and outer ring heat treated. Cage thickness: 2.5mm Blue zinc plated.



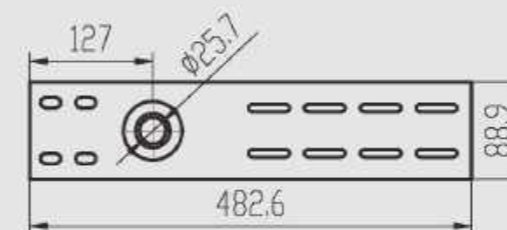
ITEM No.	WEIGHT (kg)	UNIT	SIZE	REMARK
171508	0.103	PC	ID:Φ31.78	
171509	0.133	PC	ID:Φ25.42	
				Material: bearing steel. Inner ring and outer ring heat treated. Blue zinc plated.



ITEM No.	WEIGHT (kg)	UNIT	SIZE	REMARK
M12208	0.142	PC		
				Material: carbon steel. Inner ring, outer ring and spacer heat treated. Cage thickness: 3mm Silvery zinc plated.



ITEM No.	WEIGHT (kg)	UNIT	SIZE	REMARK
101967	0.166	PC		
				Material: carbon steel Inner ring and outer ring heat treated. Cage thickness: 2mm Yellow zinc plated.

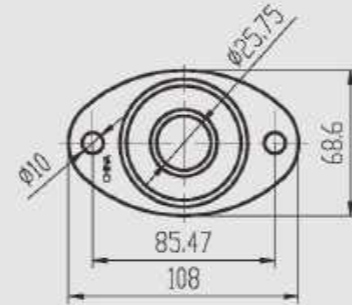


ITEM No.	WEIGHT (kg)	UNIT	SIZE	REMARK
B074-003	1.26	PC		
				Material: carbon steel. Inner ring and outer ring heat treated. Cage thickness: 3mm Blue zinc plated.



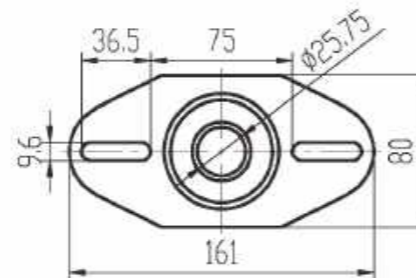
GARAGE DOOR BEARING

GARAGE DOOR ROLLER



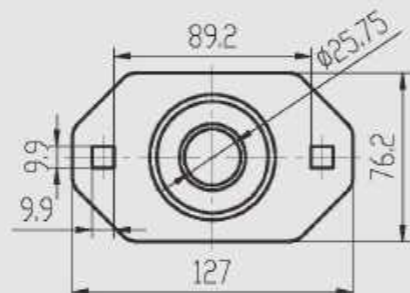
ITEM No.	WEIGHT (kg)	UNIT	SIZE	REMARK
138761	0.177	PC		

Material: carbon steel.
Inner ring and outer ring heat treated.
Cage thickness: 2mm.
Blue zinc plated.



ITEM No.	WEIGHT (kg)	UNIT	SIZE	REMARK
137757	0.314	PC		

Material: carbon steel.
Inner ring and outer ring heat treated.
Cage thickness: 3mm.
Blue zinc plated.



ITEM No.	WEIGHT (kg)	UNIT	SIZE	REMARK
148710	0.300	PC		

Material: carbon steel.
Inner ring and outer ring heat treated.
Cage thickness: 4mm.
Blue zinc plated.

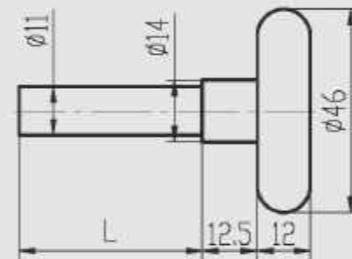
RONGLI

GARAGE DOOR ROLLER

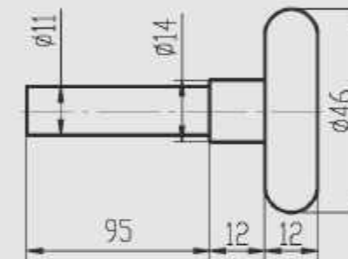


GARAGE DOOR ROLLER

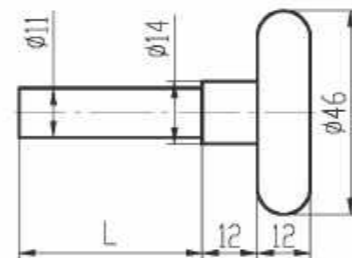
GARAGE DOOR ROLLER



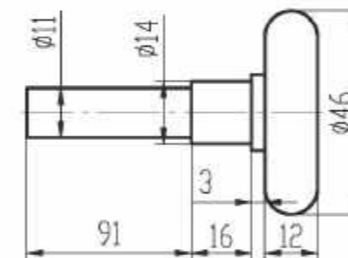
ITEM No.	WEIGHT (kg)	UNIT	SIZE	REMARK
F3112	0.139	PC	L=94	Material: PA6(nylon), carbon steel. Bulger shaft. Blue zinc plated. 11 balls. Suitable for 2" track.
F3195	0.193	PC	L=168	



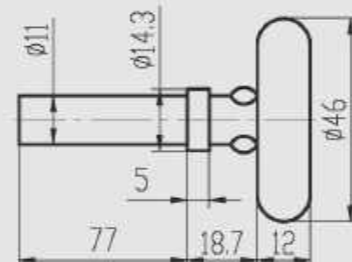
ITEM No.	WEIGHT (kg)	UNIT	SIZE	REMARK
CRB8302B	0.139	PC		Material: PA6(nylon), carbon steel. Bulger shaft Blue zinc plated 11 balls Suitable for 2" track.



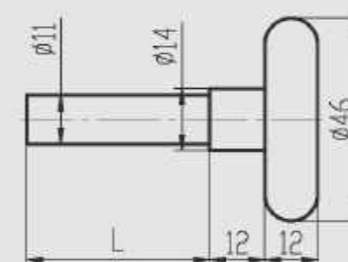
ITEM No.	WEIGHT (kg)	UNIT	SIZE	REMARK
CRB8301	0.136	PC	L=90	Material: PA6(nylon), carbon steel. Bulger shaft. Blue zinc plated. 11 balls. Suitable for 2" track.
CRB8302	0.138	PC	L=95	
CRB8303	0.165	PC	L=130	
CRB8308	0.193	PC	L=168	



ITEM No.	WEIGHT (kg)	UNIT	SIZE	REMARK
CRB8304	0.146	PC		Material: PA6(nylon), carbon steel. Bulger shaft Blue zinc plated 11 balls, with 2 shields Suitable for 2" track.



ITEM No.	WEIGHT (kg)	UNIT	SIZE	REMARK
CRB8302A	0.128	PC		Material: PA6(nylon), carbon steel. With ears. Yellow zinc plated. 11 balls. Suitable for 2" track.

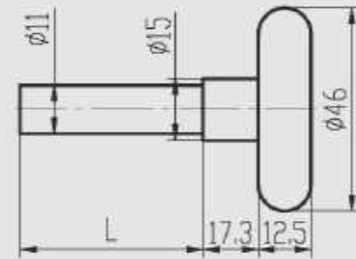


ITEM No.	WEIGHT (kg)	UNIT	SIZE	REMARK
CRB8310	0.138	PC	L=95	Material: PA6(nylon), stainless steel. Bulger shaft 11 balls Suitable for 2" track.
CRB8311	0.165	PC	L=130	
MCB99371-48-SS	0.105	PC	L=48	

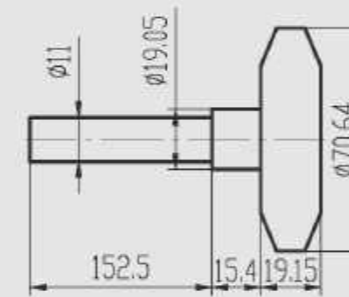


GARAGE DOOR ROLLER

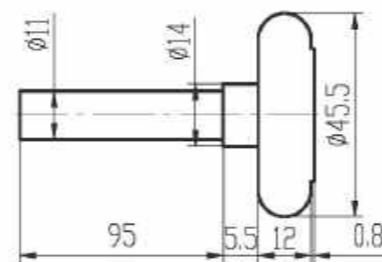
GARAGE DOOR ROLLER



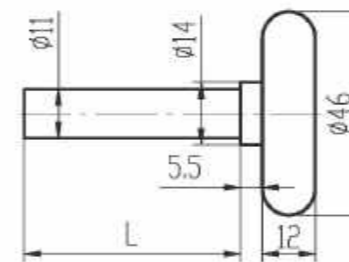
ITEM No.	WEIGHT (kg)	UNIT	SIZE	REMARK
K021692	0.146	PC	L=85	Material: PA6(nylon), stainless steel Bulger shaft 11 balls Suitable for 2" track
K054518	0.199	PC	L=157	



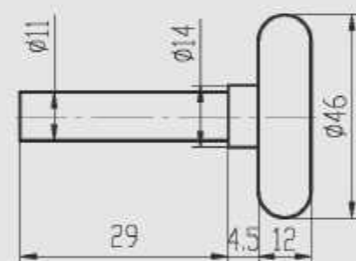
ITEM No.	WEIGHT (kg)	UNIT	SIZE	REMARK
CRB8340	0.271	PC		Material: PA6(nylon), 6202-2RS inside carbon steel, Bulger shaft Blue zinc plated Suitable for 3" track



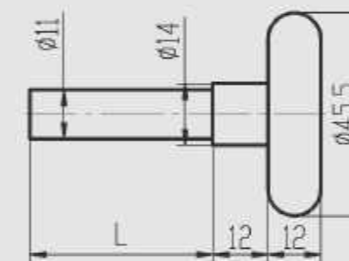
ITEM No.	WEIGHT (kg)	UNIT	SIZE	REMARK
RL4611	0.124	PC		Material: PA6(nylon), carbon steel Bulger shaft Blue zinc plated 11 balls, with 2 shields Suitable for 2" track.



ITEM No.	WEIGHT (kg)	UNIT	SIZE	REMARK
CRB8367	0.132	PC	L=95	Material: PA6(nylon), carbon steel Bulger shaft, stainless steel Blue zinc plated 11 balls, with 2 shields Suitable for 2" track
CRB8367A	0.185	PC	L=170	



ITEM No.	WEIGHT (kg)	UNIT	SIZE	REMARK
574S	0.084	PC		Material: PA6(nylon), carbon steel Bulger shaft Blue zinc plated 11 balls Suitable for 2" track.

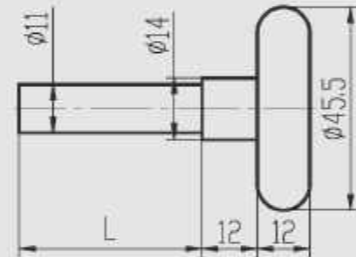


ITEM No.	WEIGHT (kg)	UNIT	SIZE	REMARK
CRB8390	0.125	PC	L=96	Material: PA6(nylon), 6001-ZZ inside Bulger shaft, carbon steel Blue zinc plated Suitable for 2" track
CRB8389	0.178	PC	L=171	

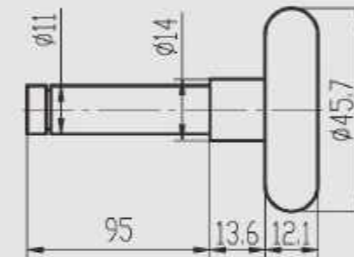


GARAGE DOOR ROLLER

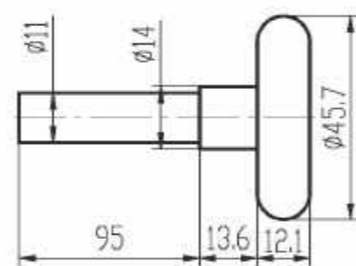
GARAGE DOOR ROLLER



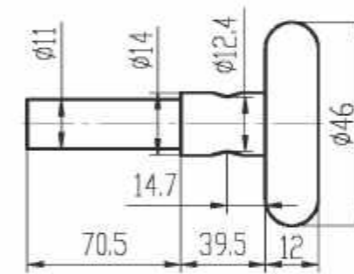
ITEM No.	WEIGHT (kg)	UNIT	SIZE	REMARK
CRB8398	0.124	PC	L=96	Material:PA6(nylon), stainless steel Bulger shaft, 6001-ZZ inside Suitable for 2" track
CRB8398A	0.178	PC	L=171	



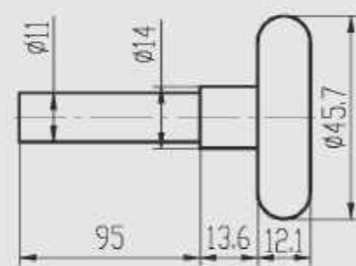
ITEM No.	WEIGHT (kg)	UNIT	SIZE	REMARK
250448	0.141	PC		Material: PA6(nylon), carbon steel Bulger shaft Blue zinc plated 11 balls Suitable for 2" track



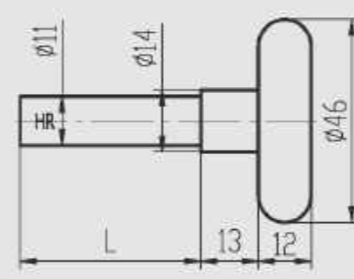
ITEM No.	WEIGHT (kg)	UNIT	SIZE	REMARK
201395	0.141	PC		Material:PA6(nylon), carbon steel Bulger shaft Blue zinc plated 11 balls Suitable for 2" track



ITEM No.	WEIGHT (kg)	UNIT	SIZE	REMARK
577	0.155	PC		Material: PA6(nylon), carbon steel Bulger shaft Blue zinc plated 11 balls Suitable for 2" track.



ITEM No.	WEIGHT (kg)	UNIT	SIZE	REMARK
201396	0.142	PC		Material:PA6(nylon), carbon steel Bulger shaft Blue zinc plated 11 balls Suitable for 2" track

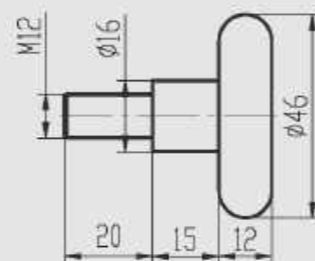


ITEM No.	WEIGHT (kg)	UNIT	SIZE	REMARK
C009-023-5	0.157	PC	L=115.5	Material: PA6(nylon), carbon steel Bulger shaft, shaft head treated Blue zinc plated 11 balls Suitable for 2" track.
C009-023-9	0.231	PC	L=217	

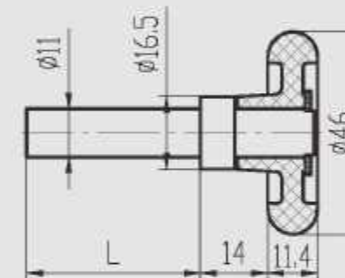


GARAGE DOOR ROLLER

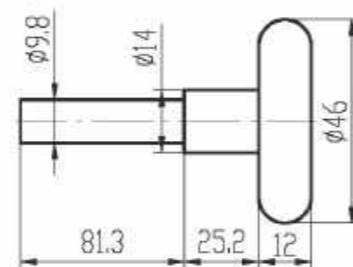
GARAGE DOOR ROLLER



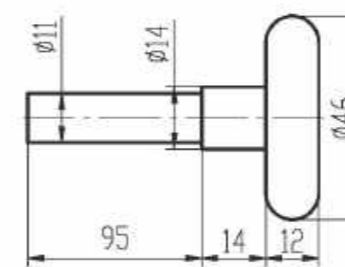
ITEM No.	WEIGHT (kg)	UNIT	SIZE	REMARK
687-01	0.094	PC		Material: PA6(nylon), carbon steel Bulger shaft Blue zinc plated 11 balls Suitable for 2" track.



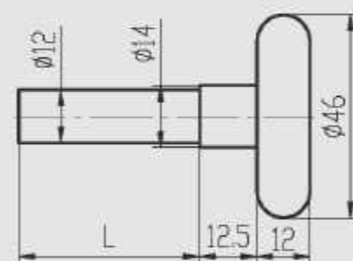
ITEM No.	WEIGHT (kg)	UNIT	SIZE	REMARK
C009-012-4	0.109	PC	L=93.5	Material: PA6(nylon), carbon steel Bulger shaft Blue zinc plated With no ball Suitable for 2" track.
C009-012-5	0.119	PC	L=106	
C009-012-7	0.162	PC	L=166.5	



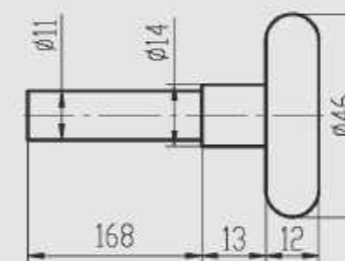
ITEM No.	WEIGHT (kg)	UNIT	SIZE	REMARK
574LD	0.135	PC		Material: PA6(nylon), carbon steel Bulger shaft Blue zinc plated 11 balls Suitable for 2" track.



ITEM No.	WEIGHT (kg)	UNIT	SIZE	REMARK
C009-013-W4	0.141	PC		Material: PA6(nylon), carbon steel Bulger shaft Blue zinc plated 11 balls Suitable for 2" track.



ITEM No.	WEIGHT (kg)	UNIT	SIZE	REMARK
584-60	0.144	PC	L=94	Material: PA6(nylon), carbon steel Bulger shaft Blue zinc plated 11 balls Suitable for 2" track.
585-60	0.220	PC	L=170	

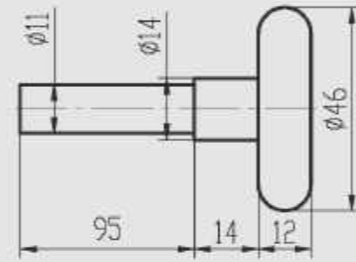


ITEM No.	WEIGHT (kg)	UNIT	SIZE	REMARK
C009-013-W7	0.194	PC		Material: PA6(nylon), carbon steel Bulger shaft Blue zinc plated 11 balls Suitable for 2" track.

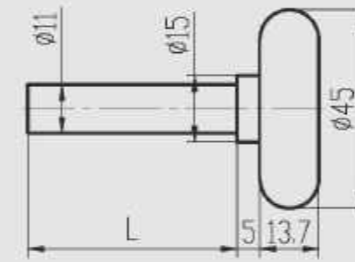


GARAGE DOOR ROLLER

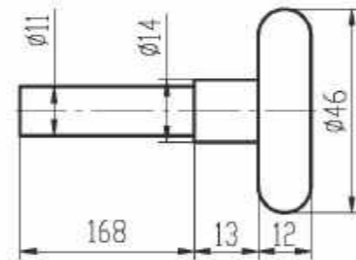
GARAGE DOOR ROLLER



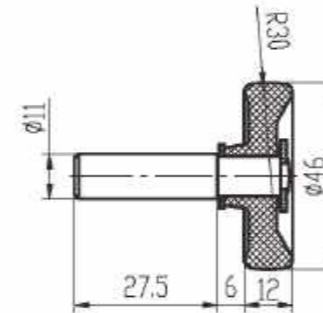
ITEM No.	WEIGHT (kg)	UNIT	SIZE	REMARK
C009-013-B4	0.142	PC		Material: PA6(nylon), carbon steel Bulger shaft Blue zinc plated 11 balls Suitable for 2" track



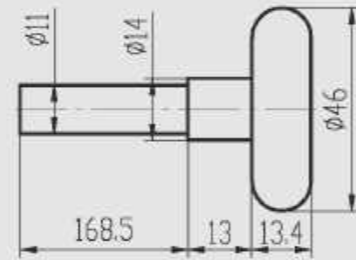
ITEM No.	WEIGHT (kg)	UNIT	SIZE	REMARK
MCB99178-63-SS	0.104	PC	L=63	Material: PA6(nylon), 6200-ZZ inside Bulger shaft, stainless steel Suitable for 2" track.
MCB99178-97-SS	0.129	PC	L=97	
MCB99178-177-SS	0.186	PC	L=177	



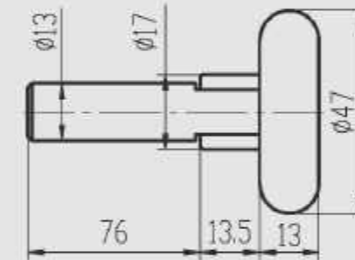
ITEM No.	WEIGHT (kg)	UNIT	SIZE	REMARK
C009-013-B7	0.193	PC		Material: PA6(nylon), carbon steel Bulger shaft Blue zinc plated 11 balls Suitable for 2" track.



ITEM No.	WEIGHT (kg)	UNIT	SIZE	REMARK
36010001	0.048	PC		Material: PA6(nylon), carbon steel Blue zinc plated With no ball Suitable for 2" track.



ITEM No.	WEIGHT (kg)	UNIT	SIZE	REMARK
C009-019-7	0.19	PC		Material: PA6(nylon), 6200-ZZ inside Bulger shaft, carbon steel Blue zinc plated 11 balls Suitable for 2" track.

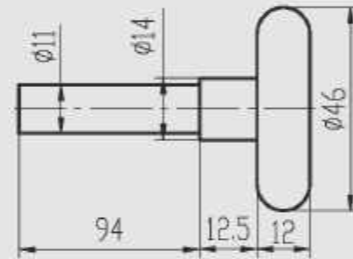


ITEM No.	WEIGHT (kg)	UNIT	SIZE	REMARK
2825	0.164	PC		Material: polyurethane, carbon steel 6000-ZZ. snap ring and sleeve inside one side on of bearing is spacer, another side is needle bearing Blue zinc plated Suitable for 2" track.

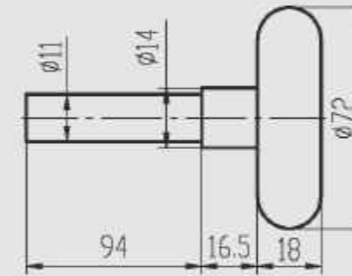


GARAGE DOOR ROLLER

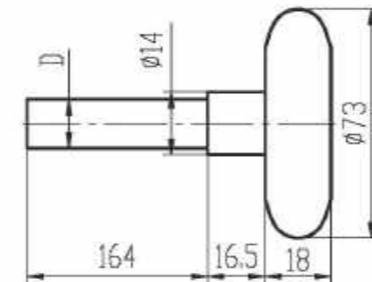
GARAGE DOOR ROLLER



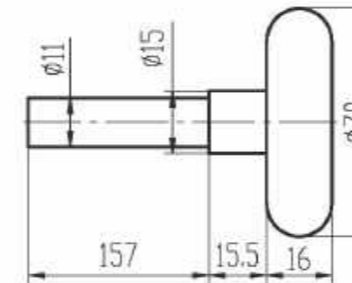
ITEM No.	WEIGHT (kg)	UNIT	SIZE	REMARK
P1021	0.126	PC		
				Material: PA66(nylon), 6001-ZZ inside Bulger shaft, carbon steel Blue zinc plated Suitable for 2" track.



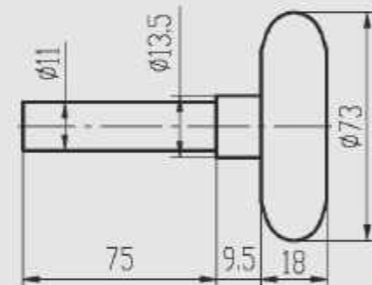
ITEM No.	WEIGHT (kg)	UNIT	SIZE	REMARK
T1023	0.190	PC		
				Material: ABS,TPU, 6201-ZZ inside Bulger shaft, carbon steel Blue zinc plated Suitable for 3" track.



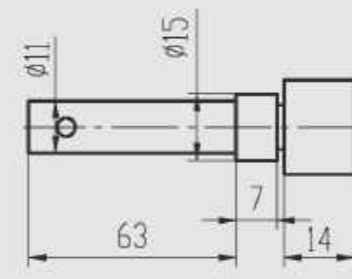
ITEM No.	WEIGHT (kg)	UNIT	SIZE	REMARK
578-12-198	0.266	PC	D=12	
579-11-198	0.243	PC	D=11	
				Material: PA6(nylon), 6201-ZZ inside Bulger shaft, carbon steel Blue zinc plated Suitable for 3" track.



ITEM No.	WEIGHT (kg)	UNIT	SIZE	REMARK
K001370	0.244	PC		
				Material: PA6(nylon), 6300-ZZ inside Bulger shaft, carbon steel Blue zinc plated Suitable for 3" track.



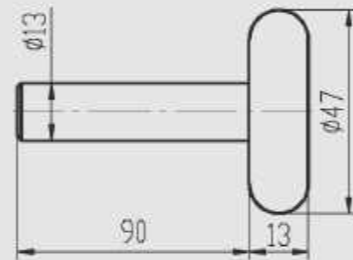
ITEM No.	WEIGHT (kg)	UNIT	SIZE	REMARK
175100	0.168	PC		
				Material: PA6(nylon), 6201-ZZ inside Bulger shaft, carbon steel Blue zinc plated Suitable for 3" track.



ITEM No.	WEIGHT (kg)	UNIT	SIZE	REMARK
RL580	0.071	PC		
				Material: PA6(nylon), carbon steel Bulger shaft Blue zinc plated With no ball



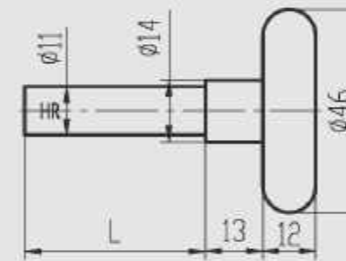
GARAGE DOOR ROLLER



ITEM No.	WEIGHT (kg)	UNIT	SIZE	REMARK
2826	0.157	PC		

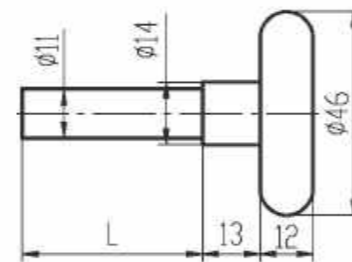
Material: polyurethane, carbon steel
6000-ZZ. snap ring and sleeve inside
Blue zinc plated
Suitable for 2" track.

GARAGE DOOR ROLLER



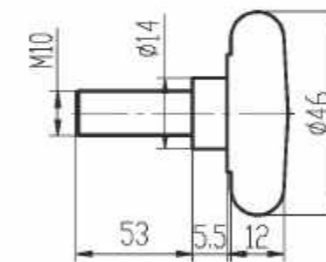
ITEM No.	WEIGHT (kg)	UNIT	SIZE	REMARK
C009-024-5	0.192	PC	L=115.5	
C009-024-9	0.268	PC	L=217	

Material: carbon steel
Bulger shaft, shaft heat treated
Blue zinc plated
10 balls
Suitable for 2" track.



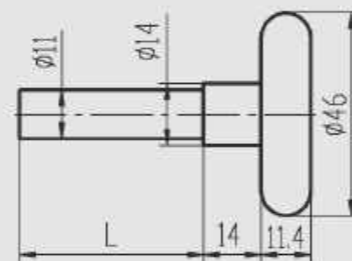
ITEM No.	WEIGHT (kg)	UNIT	SIZE	REMARK
C009-014-4	0.169	PC	L=95.5	
C009-014-5	0.177	PC	L=108	
C009-014-7	0.212	PC	L=155	
C009-014-9	0.255	PC	L=215	

Material: carbon steel
Bulger shaft
Blue zinc plated
10 balls
Suitable for 2" track.



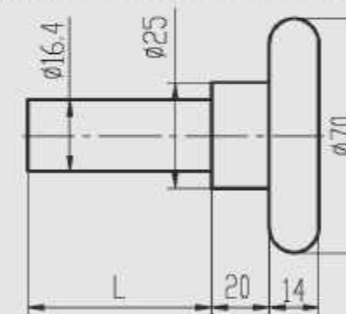
ITEM No.	WEIGHT (kg)	UNIT	SIZE	REMARK
RL4609M	0.116	PC		

Material: carbon steel
Bulger shaft
Blue zinc plated
10 balls
Suitable for 2" track.



ITEM No.	WEIGHT (kg)	UNIT	SIZE	REMARK
C009-017-4	0.145	PC	L=95.5	
C009-017-5	0.154	PC	L=108	

Material: carbon steel
Bulger shaft
Blue zinc plated
7 balls
Suitable for 2" track.



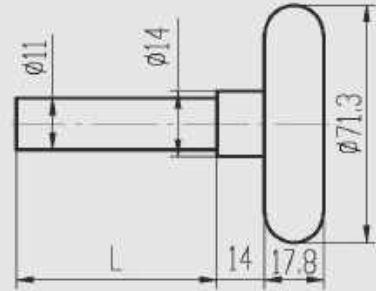
ITEM No.	WEIGHT (kg)	UNIT	SIZE	REMARK
K000236	0.658	PC	L=150	
K002927	0.894	PC	L=295	

Material: carbon steel, 6204-ZZ inside
Bulger shaft
Blue zinc plated.
Suitable for 3" track.

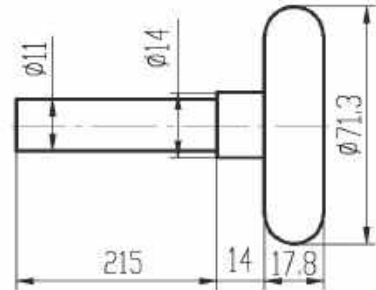




GARAGE DOOR ROLLER



ITEM No.	WEIGHT (kg)	UNIT	SIZE	REMARK
C009-018-4	0.310	PC	L=88.5	Material: carbon steel Bulger shaft 10 balls Suitable for 3" track.
C009-018-7	0.364	PC	L=161.5	



ITEM No.	WEIGHT (kg)	UNIT	SIZE	REMARK
579N	0.410	PC		Material: carbon steel Bulger shaft Blue zinc plated 10 balls Suitable for 3" track.



XINCHANG
RONGLI BEARING CO.,LTD.

ADD: No.68 Jiaocheng Road, Chengtan Town,
Xinchang County, Zhejiang, China

TEL: +86-15968528811

FAX: +86-0575-86131162

E-MAIL: rl009@ronglichina.com

www.ronglichina.com

www.rongli-mfg.com